

Other Relevant Information:

How to Decontaminate Equipment:

- 140 degrees F for 10 seconds contact time
- 120 degrees F for at least 2 minutes contact time

Additional Equipment to Inspect, Dry and Decontaminate:

- Ropes
- Chains
- Waders
- Paddle boards, kayaks and boats
- Buoys
- Water sport equipment
- Anchors
- Jet skis/wake boats



PHOTOS PROVIDED BY THE NORTH DAKOTA GAME AND FISH DEPARTMENT

Docks and Boat Lifts Can Spread Aquatic Nuisance Species!

For More Information on ANS:

NORTH DAKOTA GAME AND FISH DEPARTMENT

100 N. Bismarck Expressway
Bismarck, ND 58501-5095

701-328-6300

Email: ndgf@nd.gov

Website: gf.nd.gov/ans



Learn how to prevent the spread of aquatic nuisance species when purchasing or moving a boat dock or lift.

NORTH Dakota | Game and Fish
Be Legendary.™



Printed August 2020

The NDGFD receives federal financial assistance from the US Fish and Wildlife Service. In accordance with Title VI of the Civil Rights Act of 1964, Section 504 of the Rehabilitation Act of 1973, Title II of the Americans with Disabilities Act of 1990, the Age Discrimination Act of 1975, and Title IX of the Education Amendments of 1972, the NDGFD joins the US Department of the Interior and its Bureaus in prohibiting discrimination on the basis of race, color, national origin, age, disability, sex (in education programs or activities) and also religion for the NDGFD. If you believe you have been discriminated against in any program, activity, or facility as described above, or you desire further information, please write to: ND Game and Fish Department, Attn: Chief Administrative Services, 100 N. Bismarck Expressway, Bismarck, ND 58501-5095 or to: US Fish and Wildlife Service, Attn: Civil Rights Coordinator, 4401 N. Fairfax Drive, Mail Stop: MBSP- 4020, Arlington, Virginia 22203. The TTY/TTD (Relay ND) number for the hearing or speech impaired is 1-800-366-6888.

NORTH Dakota | Game and Fish
Be Legendary.™



The Threat: Zebra Mussels

What are they?

Zebra mussels are small D-shaped or triangular bivalves with alternating light and dark brown stripes. These mussels attach to hard surfaces using byssal threads and can filter 1 liter of water a day. Females can release more than 500,000 eggs per year.

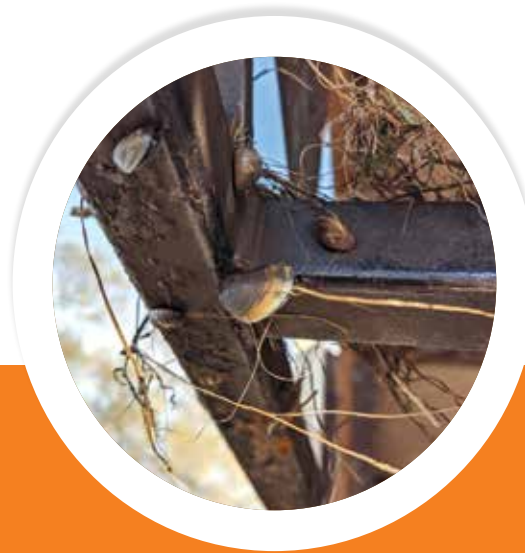
What are their impacts?

- Impacts the food web
- Impacts water quality
- Clogs pipes and water intakes
- Damage to boats and motors
- Cut unprotected feet
- Reduces property value



The Risk: Docks and Boat Lifts

Boat docks and lifts are high risk vectors for spreading ANS, especially zebra mussels. When docks and lifts are moved from one waterbody to another, mussels may hitch a ride to an uninfested waterbody. Under ideal weather conditions, zebra mussel adults can survive out of water for weeks at a time.



The Solution: Inspect and Dry

When transporting docks or boat lifts, visually inspect and remove ANS such as zebra mussels. It's critically important to **dry docks/lifts for at least three weeks** before placing in a different waterbody.

