

NORTH DAKOTA GAME AND FISH DEPARTMENT

Final Report
Implementation of North Dakota's Wildlife Action Plan through the North Dakota Game
and Fish Department's Private Lands Initiative.
Project T-22-HM

July 1, 2007 – June 30, 2013

Terry Steinwand
Director

Submitted by Kevin Kading
Private Lands Coordinator
Bismarck, ND

September 2013

North Dakota SWG Final Report
July 1, 2007- June 30, 2013

State Agency: North Dakota Game and Fish Department

Project Title: Implementation of North Dakota's Wildlife Action Plan through the North Dakota Game and Fish Department's (Department) Private Lands Initiative.

Activity Period: July 1, 2007 – June 30, 2013.

Location: Nine primary landscapes components and twenty-one focus areas identified as key habitats or community types essential to species of conservation priority.

Objectives:

1. Conserve and enhance key habitats identified in North Dakota's Wildlife Action Plan on private land through the Department's Private Lands Initiative program.
2. Partner with the North Dakota Game and Fish Department's Private Lands Initiative program to develop criteria and identify programs to benefit species of conservation priority.

Final Outcomes

Since inception, Department private land biologists worked with private landowners across the state within 18 counties and nine SWG primary focus areas to develop 80 agreements totaling 13,162.5 acres using funds from this grant. (Fig. 1) Projects completed through those agreements include: short term and long term habitat protection, haying and grazing management, prescribed burning, rotational haying, protection of expired CRP, and grass establishment.

48 agreements included haying and grazing management of CRP contracts, as well as providing public access for the term of the CRP contract. 22 agreements include protection of existing habitat (native or tame grass), and establishing new grass. 9 agreements were written for long term protection and management (prescribed burning, prescribed grazing etc...) of grassland habitats and one agreement was written for forested land protection and management.

The Department has a monitoring process in place consisting of GPS photo points, rangeland inventory, historical imagery, land use, bird point counts and others. We will continue to monitor the effectiveness of the treatments and management practices utilized through this grant. A monitoring example is included at the end of this report. (Fig. 2)

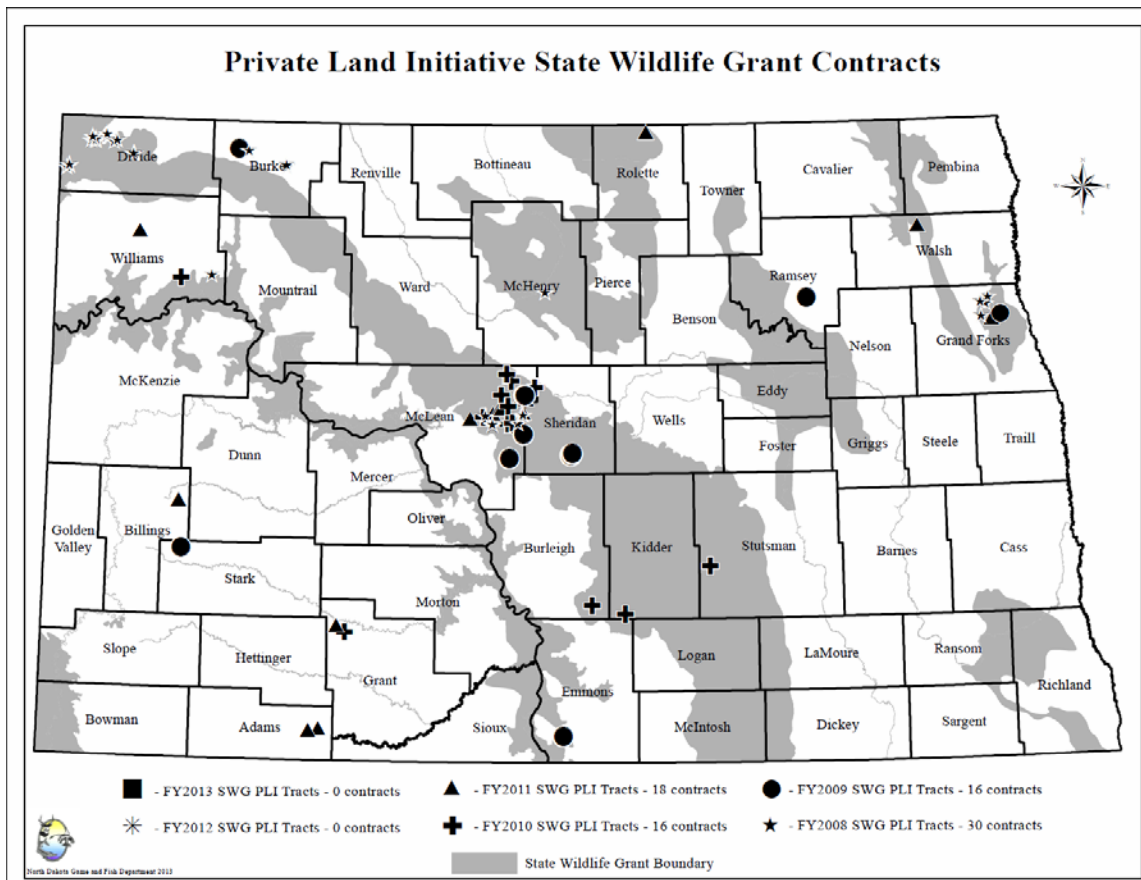




Figure 1. Locations of agreements and projects funded through SWG.

Figure 2. Example of monitoring efforts.



North Dakota Game and Fish Department PLOTS Bird Survey



PLOTS Agreement#	4610001
Unit Type	SWG-LT
Agreement Date	4/1/2010 – 12/31/2019
County	Burleigh
TwpRngSec	T137N R75W S. 7
Acres	320
Survey Date	May 25, 2011
Survey Time	6:14 – 7:45 AM
Observer	S. Johnson

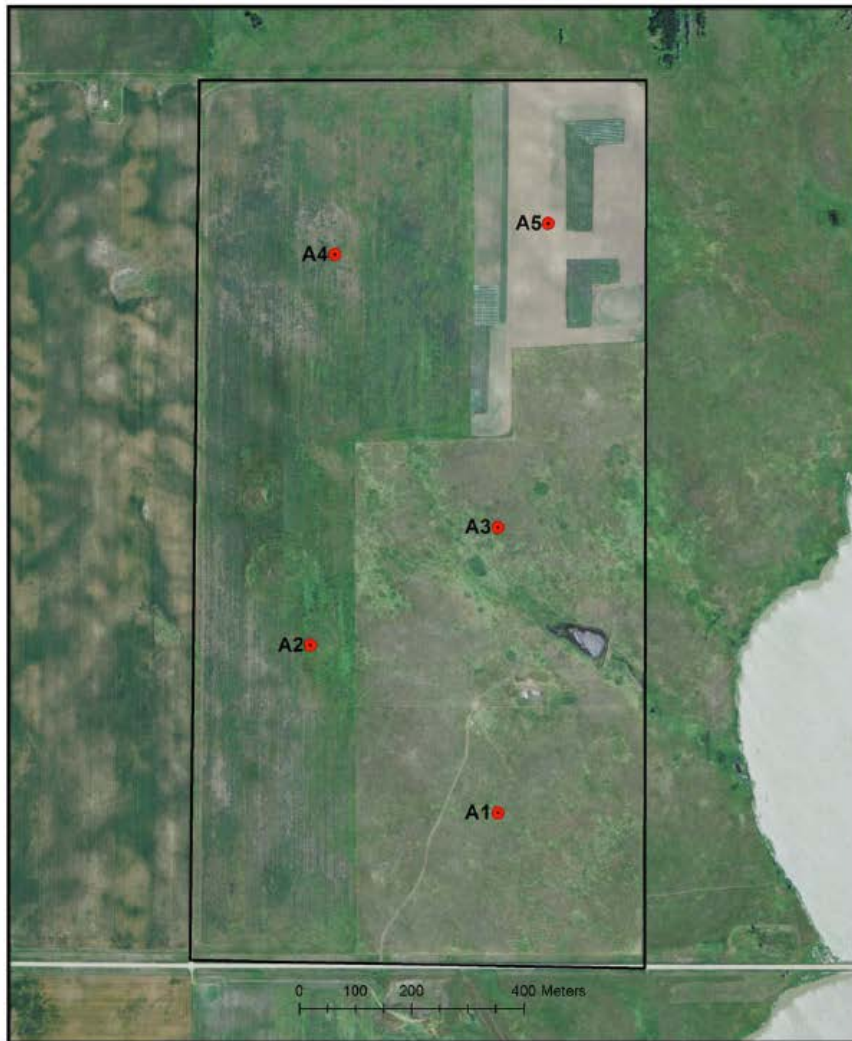
<u>Species Detected on Surveys</u>	<u>Other Observations</u>
Gadwall Ring-necked Pheasant Sharp-tailed Grouse Mourning Dove Western Kingbird Eastern Kingbird Horned Lark Barn Swallow Unknown Swallow American Crow Sedge Wren Clay-colored Sparrow Savannah Sparrow Chestnut-collared Longspur Grasshopper Sparrow Unknown Sparrow Bobolink Western Meadowlark Brown-headed Cowbird	Northern Pintail Blue-winged Teal Northern Shoveler Northern Harrier Marbled Godwit

Bold = Species of Conservation Priority

Comments

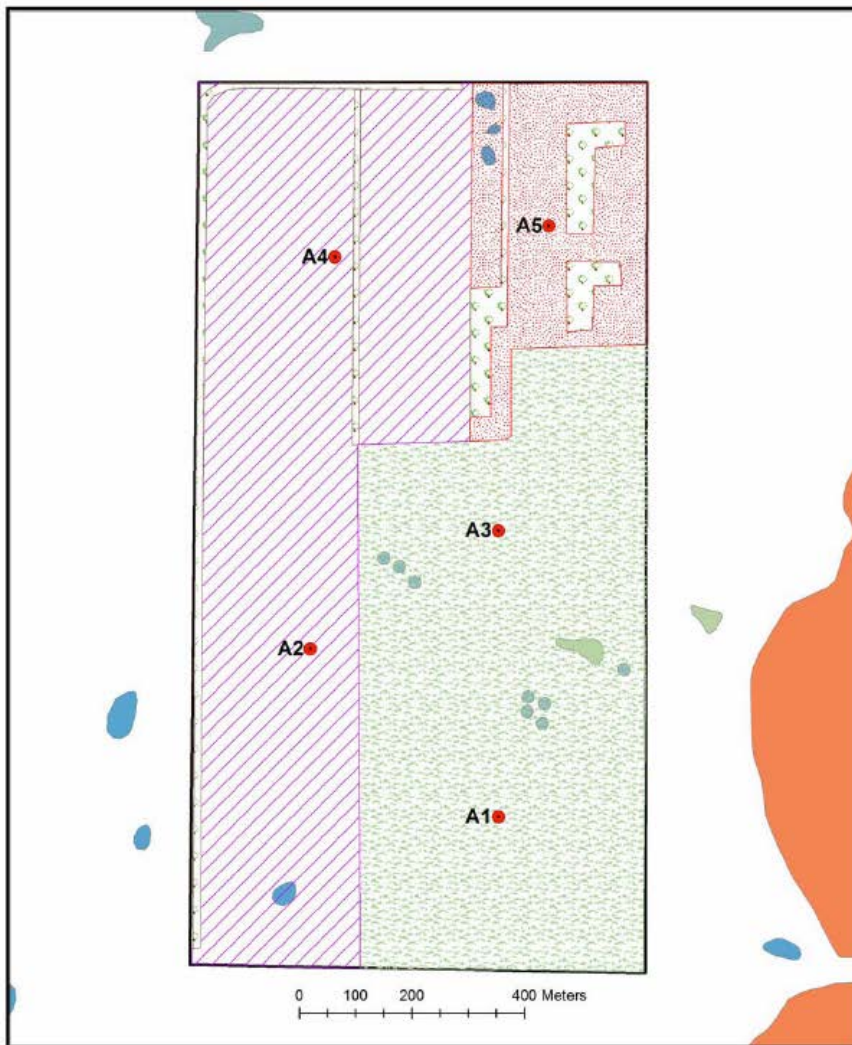
- 24 species encountered including 8 Species of Conservation Priority
- Chestnut-collared Longspurs** abundant in southern portion of native prairie.
- Presumed nesting Blue-winged Teal just north of A1 point.
- Planted trees in NE corner of plot are new (1-2 yrs old?), single juniper row thru middle of northern PLOTS and on western & northern edge ~5 ft tall. Morning Doves frequent fly-overs at A5.
- Bobolink** and **Sedge Wren** detected on A4 and A2 were present only in uncut portion of hayland (western 1/2 of hayland).
- Male **Northern Harrier** was present on remnants of hay bale.

4610001
Page 1



Agreement: 4610001
County: Burleigh
T137N R075W S. 7
Total Acres: 320

Survey Type
● Point Count



Agreement: 4610001
 County: Burleigh
 T137N R075W S. 7
 Total Acres: 320

Survey Type
 ● Point Count

Cropland	Introduced Vegetation	Temporary	Intermittent
Dam	Native Prairie	Seasonal	River
Developed	New Tree Rows	Semipermanent	Lake
Emergent Wetland Vegetation	Riparian	Perennial	Artificial
Hayland	Trees or Shrubs		

Point Count A1

Latitude: 46.694153

Longitude: -100.19921



A1 South



A1 East



A1 North



A1 West

Species detected, excluding fly-overs.

Sharp-tailed Grouse
Savannah Sparrow
Grasshopper Sparrow
Chestnut-collared Longspur
Western Meadowlark

Point Count A2

Latitude: 46.69688

Longitude: -100.203639



A2 South



A2 East



A2 North



A2 West

Species detected, excluding fly-overs.

Sedge Wren
Clay-colored Sparrow
Bobolink
Western Meadowlark

Point Count A3

Latitude: 46.69879

Longitude: -100.19921



A3 South



A3 East



A3 North



A3 West

Species detected, excluding fly-overs.

Ring-necked Pheasant
Clay-colored Sparrow
Savannah Sparrow
Grasshopper Sparrow
Chestnut-collared Longspur
Bobolink
Western Meadowlark

Point Count A4

Latitude: 46.703234

Longitude: -100.203062



A4 South



A4 East



A4 North



A4 West

Species detected, excluding fly-overs.

Clay-colored Sparrow
Savannah Sparrow
Grasshopper Sparrow
Bobolink
Western Meadowlark
Brown-headed Cowbird

Point Count A5

Latitude: 46.703739

Longitude: -100.198018



A5 South



A5 East



A5 North



A5 West

Species detected, excluding fly-overs.

Ring-necked Pheasant
Horned Lark
Clay-colored Sparrow
Savannah Sparrow
Grasshopper Sparrow
Western Meadowlark